

# NETWORK ACCESS MODERNIZATION: BUSINESS AND IT TRENDS

Two primary factors are changing network access requirements. Hybrid work models are driving demand for more bandwidth and the need for cloud connectivity and borderless security. Advanced chipsets are bringing greater power to endpoints, including Internet of Things (IoT) devices with embedded artificial intelligence (AI) capabilities.

**95%** of organizations say real-time communication traffic volumes have increased with hybrid work.<sup>1</sup>

**81%** of AI chipsets will be embedded in IoT devices, the fastest-growing platform area.<sup>5</sup>

**46%** of organizations are investing in high-bandwidth Wi-Fi to support greater device density and demand for real-time applications.<sup>2</sup>

**17.9%** compound annual growth rate of the Wi-Fi 6 market through 2027.<sup>6</sup>

**30%** of organizations are interested in using location-based technologies to enable more sustainable work environments.<sup>3</sup>

**18.5%** compound annual growth rate of the Bluetooth Low Energy market through 2027.<sup>7</sup>

**87%** of chipsets shipping globally will have AI capabilities by 2027.<sup>4</sup>

1,2,3 Enterprise Management Associates  
4,5 Research and Markets  
6 Markets and Markets  
7 Brand Essence Market Research

## WHY ORGANIZATIONS ARE UPGRADING THEIR NETWORKS



### REAL-TIME APPLICATIONS

Use of voice and video conferencing, video streaming and other real-time applications has skyrocketed, driving the need for reduced latency.



### EXPANDING DEVICE USAGE

Users are bringing multiple devices into the workplace, increasing competition for Wi-Fi bandwidth and the need for improved access management.



### MISSION-CRITICAL WI-FI

Today's wireless network should provide greater coverage to support seamless roaming among collaborative spaces.



### IoT INITIATIVES

IoT connectivity often requires Wi-Fi and switch upgrades and new authentication and network segmentation capabilities.



### LOCATION-BASED TECHNOLOGIES

Organizations are looking to implement location-based services for managing "hot desk" availability and providing insight into user behaviors and interactions.

## FACTORS DRIVING WI-FI 6 ADOPTION

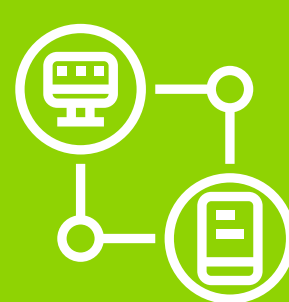
### GROWING CONNECTIVITY DEMANDS



Adoption of "wireless first" networking strategies and growing numbers of endpoints are increasing demand for Wi-Fi connectivity.

### BROAD DEVICE SUPPORT

Devices supporting Wi-Fi 6 and Wi-Fi 6E are expected to account for 80 percent of the smartphone market by 2025.



### WIDER CHANNELS



Wi-Fi 6E extends into the 6GHz band, which dramatically increases capacity with 14 new 80MHz channels and seven new 160MHz channels.

### FASTER PERFORMANCE, LOWER LATENCY

The 802.11ax standard enables greater throughput and lower latency to support high-performance apps and real-time communications.



### ENHANCED USER EXPERIENCE



A broader spectrum and wider channels support more simultaneous high-speed connections for an improved user experience.

## Want to learn more?

Please contact your ProSys team to discuss how we can better support your office environment.